



**BONAVOX**

WE HEAR YOU BETTER

## **HEARING AID SYSTEMS**

YOUR QUESTIONS ANSWERED



**HEARING IS PRECIOUS**

TRUST YOURS TO THE EXPERTS

**The decision to buy a hearing aid system is a very important one. It's natural to have questions:**

- Is it time to take action?
- How do modern hearing aid systems work?
- How much should I expect to pay?
- Will a hearing aid system be successful in my case?
- What happens when my hearing aid system needs attention?



# IS IT TIME TO TAKE ACTION?

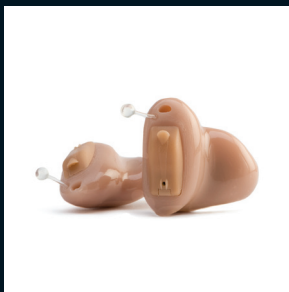
Hearing loss affects around 10% of the population. In Ireland it means there are around 400,000 people with a hearing impairment. Only a small number of those who need a hearing aid system actually use one, putting themselves at many disadvantages and greatly reducing their quality of life.

**If you answer 'yes' to the following questions, then it's time to seek advice:**

- Does it seem that others are always mumbling in conversation?
- Do you have to ask others to repeat themselves over and over again?
- Is it difficult for you to understand speech in noisy places?
- Do you find it easier to understand others when you are looking directly at their faces?
- Do you have trouble hearing on the telephone?
- Are you often told you have the TV volume up too loud?
- Do you often misunderstand what people tell you?

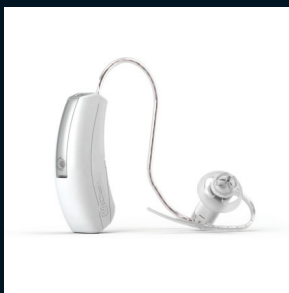
## HOW DO MODERN HEARING AID SYSTEMS WORK?

Modern digital hearing aid systems are in essence micro-computers dedicated solely to enabling you to hear better in everyday situations. Each year they become smaller, more powerful, more efficient and customisable, allowing us to cater to your individual hearing loss.



### CIC

The smallest of the hearing aid system family is **Completely-in-the-Canal (CIC)**. With their small size and deep fit the CIC is almost invisible.



### RIC

**Receiver-in-the-Canal (RIC)** are very small Behind-the-Ear devices. These are the most discrete of the BTE devices, not immediately obvious to even the most observant.



**BTE** Behind-the-Ear (BTE) aids come in various sizes and serve people with differing levels of hearing loss. These hearing aids are becoming smaller and more customisable all the time, in many different colours to match hair or skin type, helping to further disguise the device. Open fit BTE hearing aids connect to the ear via a small discreet tube with a tulip or dome ear tip.



**ITC** Still discrete, the **In-the-Canal (ITC)** device is slightly bigger to pack in power and meet the needs of users with moderate to severe hearing losses.

**Most modern hearing aid systems also come with the option of a small remote control to discretely change the settings or volume.**

## NEXT STEPS

**Initially, if you detect a hearing problem, particularly a sudden loss, you should consult your doctor. The problem may benefit from medical intervention.**

Should you decide to visit us, you will be given a comprehensive hearing assessment to determine your hearing loss and identify the most suitable solution.

The hearing assessment is free of charge and does not hold you under any obligation. At this stage in our relationship we are here purely to advise on your hearing problem and possible solutions.

**There is no need to book an appointment.**

## OUR OPENING HOURS ARE:

**Monday to Friday 9.30am to 5.30pm  
and Saturday 10am to 5.30pm.**

In order for us to complete our assessment, it is vital that your ear canals are free of wax or other debris, otherwise we may not be able to obtain an accurate reading of your hearing.

## HOW MUCH SHOULD I EXPECT TO PAY?

Hearing aid systems vary radically in price according to their level of technology. Higher levels of technology relate directly to better benefits in more complex sound environments. The level of technology best suited to you relates directly to your lifestyle needs and budget. We include a price list with this brochure for your perusal.

## WILL A HEARING AID SYSTEM BE SUCCESSFUL IN MY CASE?

Hearing aid systems are invariably successful for most hearing losses. A new user will take some time to adapt to the new sound information provided, but a qualified Hearing Aid Dispenser will guide a new patient through their rehabilitation.

As a new user adapts to the new sound information the benefits will increase. Most benefits will be noticed in the first six months. However, they will continue in an incremental manner for up to a year.

# WHAT HAPPENS WHEN MY HEARING AID SYSTEM NEEDS ATTENTION?

**Aftercare:** Always entrust your hearing health to a well-established and qualified Hearing Aid Dispenser. They are always available for advice and help in your rehabilitation. Most importantly, in the event of a fault, they are at hand for repairs.

**Repairs:** At Bonavox, almost all repairs are carried out either on the spot, or within 24 hours. This rapid repair service is only available to Bonavox patients.

In the unlikely event of a problem with one of our hearing aid systems, come and speak to us. Most problems will be solved quickly and easily. If the problem is unfixable, simply return the hearing aid system within 30 days of purchase and we will either replace it or refund your money.

**Bonavox is a registered dispenser with the Department of Social Welfare. If you are eligible for a hearing aid grant we can organise it and deduct the grant from the purchase price of your system.**



## **BONAVOX**

WE HEAR YOU BETTER

Visit us at 9 North Earl Street, Dublin 1.

**Free Phone 1800 480 480**

Phone 01 874 2341

**[www.bonavox.ie](http://www.bonavox.ie)**